

# Revista Colombiana de Anestesiología

## Colombian Journal of Anesthesiology

www.revcolanest.com.co



### Scientific and Technological Research

## Is visual estimation useful in determining the extent of perioperative haemorrhage? A study of correlation among anaesthetists of intermediate and high complexity hospitals in Cartagena, Colombia<sup>☆</sup>



Ancizar Joaquín De La Peña Silva<sup>a,\*</sup>, Rafael Pérez Delgado<sup>b</sup>, Ismael Yepes Barreto<sup>c</sup>, Michael De La Peña Martínez<sup>a</sup>

<sup>a</sup> Anaesthesia and Resuscitation Resident, Universidad de Cartagena, Cartagena, Colombia

<sup>b</sup> Associate Professor, Anaesthesiology Department, Medical School, Universidad de Cartagena, Cartagena, Colombia

<sup>c</sup> Assistant Professor, Research Department, Medical School, Universidad de Cartagena, Cartagena, Colombia

#### ARTICLE INFO

##### Article history:

Received 18 January 2014

Accepted 7 April 2014

Available online 26 July 2014

##### Keywords:

Blood loss

Surgical

Comparative study

Perioperative period

Methods

#### ABSTRACT

**Introduction:** Ensuring Safe Surgery is a problem of great interest in public health. Bleeding is one of the most significant predictors of intraoperative outcomes. Visual estimation is the most frequently practiced method, although it is imprecise and may over or underestimate blood loss.

**Objectives:** To determine the correlation between visual estimation and the actual volume of blood soaked in surgical absorbent material, by a group of anaesthetists in the city of Cartagena. Also, to establish the determinants of the correlation between estimated and actual volumes in the perioperative period.

**Methods:** Observational study designed to estimate the correlation between visual estimation of blood loss, using photographs of gauze pads and sponges impregnated with different volumes of blood, and the actual extent of perioperative bleeding. The study sample was drawn from members of the Bolívar Anaesthesia Society, including subjects with different levels of training and experience (41 anaesthetists, 15 residents). Each participant was requested to estimate the volume of blood content (ml) in gauze pads and surgical sponges impregnated with blood, based on high-resolution photographic images. To estimate the agreement coefficient the intraclass correlation was used, and to identify factors associated with the accuracy of the estimate, a logistic regression analysis was performed. The visual estimate was considered adequate when it differed less than 10% compared to the actual known volume.

<sup>☆</sup> Please cite this article as: De La Peña Silva AJ, Delgado RP, Barreto IY, De La Peña Martínez M. ¿E útil la estimación visual en la determinación de la magnitud de la hemorragia perioperatoria?: Un estudio de concordancia en anestesiólogos de hospitales de mediana y alta complejidad en Cartagena, Colombia. Rev Colomb Anestesiología. 2014;42:247-254.

\* Corresponding author at: Dirección Correspondencia: Oficina de Postgrados, Sede Zaragocilla-Campus de la Salud, Universidad de Cartagena, 130015 Cartagena, Colombia.

E-mail address: jdelape@gmail.com (A.J. De La Peña Silva).

2256-2087/© 2014 Sociedad Colombiana de Anestesiología y Reanimación. Published by Elsevier España, S.L.U. All rights reserved.

**Results:** The visual estimate was the method of choice used by 100% of the participants to determine the extent of perioperative bleeding. However, its correlation with the actual volume of blood is suboptimal and visual estimates of the same volume of blood by different subjects were very heterogeneous (ICC: 0.582, 95% CI 0.28–0.74). A tendency to overestimate bleeding among participants using visual estimation (65.2%) was observed. The logistic regression analysis identified the level of training (OR 1.76, 95% CI 1.04–2.969,  $P=0.033$ ) and volumes greater than 75 ml of whole fresh blood in the absorbent material (OR 1.55, 95% CI 1.04–2.32,  $P=0.029$ ) as independent determinants of agreement.

**Conclusions:** Visual estimation is suboptimal as a method for determining perioperative bleeding. The objective measurement must be the method of choice in this clinical setting.

© 2014 Sociedad Colombiana de Anestesiología y Reanimación. Published by Elsevier España, S.L.U. All rights reserved.

## ¿Es útil la estimación visual en la determinación de la magnitud de la hemorragia perioperatoria?: Un estudio de concordancia en anestesiólogos de hospitales de mediana y alta complejidad en Cartagena, Colombia

### R E S U M E N

#### Palabras clave:

Pérdidas sanguíneas  
Quirúrgica  
Estudio comparativo  
Periodo perioperatorio  
Métodos

**Introducción:** Garantizar prácticas quirúrgicas seguras es un problema de gran interés en salud pública. La hemorragia es uno de los predictores más significativos de desenlaces intraoperatorios. El método más usado para determinarlo es la estimación visual, pese a que es impreciso y puede sobre o subestimar las pérdidas sanguíneas.

**Objetivos:** Determinar la concordancia entre la estimación visual y el volumen de sangre real impregnada en material absorbente quirúrgico, por un grupo de anestesiólogos de la ciudad de Cartagena. Establecer los factores determinantes de la concordancia entre los volúmenes estimados y reales en el periodo perioperatorio.

**Métodos:** Estudio observacional analítico diseñado para determinar la concordancia entre la estimación visual de la hemorragia, utilizando fotografías de compresas y gasas impregnadas con diferentes volúmenes de sangre, y la magnitud real de la hemorragia perioperatoria. La muestra de estudio fue extraída de los miembros de la Sociedad Bolivarense de Anestesiología, incluyendo a sujetos de diferente grado de formación y experiencia (41 anestesiólogos, 15 residentes). Se solicitó a cada participante que estimara el volumen de sangre contenido (ml) en gasas y compresas quirúrgicas impregnadas con sangre, basándose en imágenes fotográficas de alta resolución. Para la estimación de la concordancia se utilizó el coeficiente de correlación intraclase y para identificar los factores asociados a la precisión de la estimación se realizó un análisis por regresión logística. La estimación visual se consideró adecuada cuando difería menos de  $\pm 10$  ml con respecto al volumen real conocido.

**Resultados:** La estimación visual fue el método de elección utilizado por el 100% de los participantes para determinar la magnitud de la hemorragia perioperatoria. Sin embargo, su concordancia con los volúmenes reales de sangre es subóptima y las estimaciones visuales de los sujetos para un mismo volumen de sangre muy heterogéneas. (CCI: 0,582; IC: 95%:0,28-0,74), se observó una tendencia a la sobrestimación de la hemorragia entre los participantes al utilizar la estimación visual (65,2%). El análisis de regresión logística identificó como determinantes independientes de la concordancia el nivel de formación (OR 1,76; IC95%: 1,04-2,969;  $p=0,033$ ) y volúmenes superiores a 75 ml de sangre fresca total en el material de absorción (OR 1,55; IC 95%: 1,04-2,32;  $p=0,029$ ).

**Conclusiones:** La estimación visual es un método subóptimo para la determinación de la hemorragia perioperatoria. La medición objetiva del sangrado debe ser el método de elección en este escenario clínico.

© 2014 Sociedad Colombiana de Anestesiología y Reanimación. Publicado por Elsevier España, S.L.U. Todos los derechos reservados.

## Introduction

It is estimated that 234.2 million major surgical procedures (95% CI 187.2–281.2) are performed every year, which

means that one out of every 25 people undergoes major surgery. This large volume of interventions is associated with a high rate of complications and deaths, which are preventable in half of the cases. Consequently, ensuring safe

surgical practices is a matter of great concern in public health.<sup>1</sup>

Bleeding is one of the most significant predictors of intraoperative outcomes; in paediatric patients, it is one of the main causes of perioperative mortality<sup>2</sup>; in cancer patients, it is a predictor of disease progression as well as mortality; and in all surgical patients it predicts the need for red blood cell transfusion, which is in itself associated with higher mortality.<sup>3</sup> Different methods have been used to estimate intraoperative bleeding, including, among others, blood volume measurement, blood collection for weighing; weighing of surgical drapes, absorbent materials and other utensils containing blood from the surgery; use of colorimetric reactions for blood detection; and haemorrhage estimation based on haemoglobin or oxygen saturation before and after surgery.<sup>3,4</sup> However, the method most frequently used is visual estimation, despite its inaccuracy and the potential to under or overestimate blood losses.<sup>4</sup>

The primary objective of this study was to determine correlation between visual estimation by a group of anaesthetists in the city of Cartagena and actual blood volume impregnated in absorbent surgical material. The secondary objective was to establish determining factors of agreement between estimated and actual volumes in the perioperative period in this population.

## Methods

### Ethical considerations

This work was conducted pursuant to the ethical standards set forth under Resolution 008430 of 1993 issued by the Colombian Ministry of Health. This project falls under the No Risk Research category according to Article 10 (a) of the resolution mentioned above.

The names of the interviewees were not recorded in order to protect their identities.

The institutional Ethics Committees endorsed the project.

### Study design and population

#### Observational correlational study

All of the anaesthetists and anaesthesia residents, members of the Anaesthesia Society of Bolívar (SADEB) in July 2013, were asked to participate. Retired specialists with more than 2 years of absence from practice or specialists living outside the city were excluded (Fig. 1). They were each asked to give a visual estimate in millilitres (ml), using high definition photographs, of ten different blood volumes impregnated in surgical absorbent material. The assessment was conducted individually and anonymously by one single interviewer during a minimum time period of 10 min; each interviewee was asked to observe each photograph for at least 1 min. Data were collected from anaesthetists and anaesthesia residents practicing in the public and private intermediate and high complexity hospital network in the city of Cartagena.

### Assessment tool

#### Photographs

The surgical absorbent materials used were gauze pads (7.5 cm × 7.5 cm) and sponges (8 cm × 18 cm). Seven sponges were soaked, four of them in whole fresh blood (WFB) with 100 ml, 75 ml, 50 ml and 25 ml, and the remaining three were soaked in mixed blood and 0.9% saline solution (NSS), as follows: 75 ml WFB + 25 ml NSS; 50 ml WFB + 50 ml NSS and 25 ml WFB + 75 ml NSS. Also, three gauze pads were used, two with WFB (10 ml and 5 ml, respectively) and one with an admixture of WFB and NSS (WFB 5 ml + NSS 5 ml). The photographs were taken with a high-resolution camera by the same operator, at the same capture distance (60 cm), immediately after soaking the absorbent material. The photographs were printed in a digital format, using the same sizes of the gauze pads and sponges to enhance the simulation effect.

#### Interview

The interview included level of training and years of experience. The photographs were numbered and allowed room for the interviewees to record their visual estimation (See Annex 1).

### Statistical analysis

The data were analysed using the SPSS statistical software package version 15.0 (IBM® software).

The mean (SD) and the median (range) were used for quantitative variable description and box diagrams were used for their graphic representation, when appropriate. Categorical variables were expressed as absolute numbers and percentages. The Student's *t* test was used for comparing the means of independent samples between the groups. The Kolmogorov-Smirnov test was used for evaluating the normal distribution of the quantitative variables.

The correlation analysis was conducted using the intra-class correlation coefficient (ICC), comparing actual values with interviewee estimations. The correlation level was considered adequate at ICC > 0.75.<sup>5</sup>

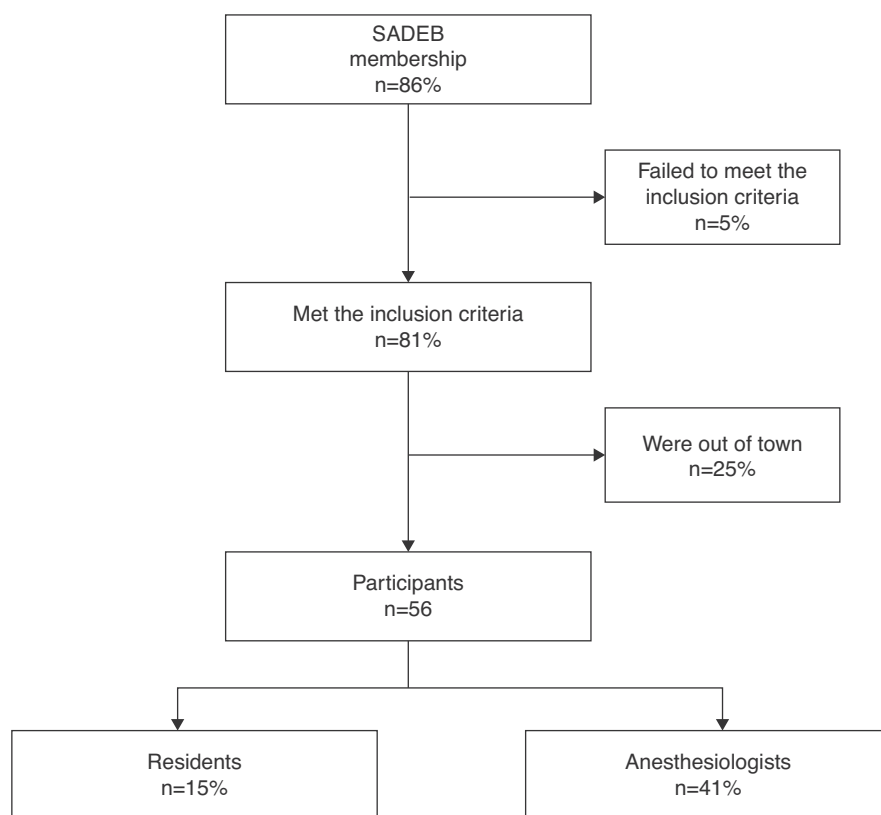
Additional correlation analyses were made by subgroups as a function of training level (anaesthetist-resident), years of experience (>5 years), and the WFB/NSS admixture.

A multivariate logistic regression (ENTER METHOD) was used for identifying predictors of agreement between visual estimations and actual values, including level of training, WFB/NSS admixtures, actual volumes (>75 ml) and years of experience of the interviewees as independent variables. Agreement was defined as occurring when the differences between estimated and actual values were not greater than ± 10 ml in the sponges and ± 2 ml in the gauze pads.

## Results

### Participant characteristics

Ultimately, 56 individuals participated voluntarily in the study (Fig. 1). Years of experience of anaesthesia



SADEB: Sociedad de Anestesiología y Reanimación de Bolívar  
(Bolívar Society of Anesthesiology and Resuscitation)

**Fig. 1 – Inclusion of participants.**

**Source: Authors.**

specialist physicians ranged between 1 and 35, with a mean of 10 years; and the experience of the residents ranged between 3 months and 3 years, with a mean of 2 years and 2 months. The correlation analysis was performed with a total of 560 estimates.

#### Visual estimation accuracy

Agreement was observed in 153 estimates (27.3%), underestimation in 42 cases (7.5%) and overestimation in 365 opportunities (65.2%). A tendency to overestimate was also observed when comparing the mean of the estimated values with the actual amount of blood in the sponges and gauze pads; however, these mean differences between estimated and actual values were smaller when the actual volume was greater than 75 ml (Table 1). The considerable heterogeneity of the estimated values in each of the 10 determinations suggests little accuracy of the visual method (Fig. 2). The logistic regression analysis identified the level of training of the anaesthetist (OR 1.76, 95% CI 1.04–2.969;  $p = 0.033$ ) and amounts greater than 75 ml of WFB in the soaked material (OR 1.55, 95% CI 1.04–2.32;  $p = 0.029$ ) as the only independent predictors of agreement between the estimated and actual values, above the years of professional experience or the absence of NSS in the absorbent material (Table 2).

#### Correlation between visual and objective estimations

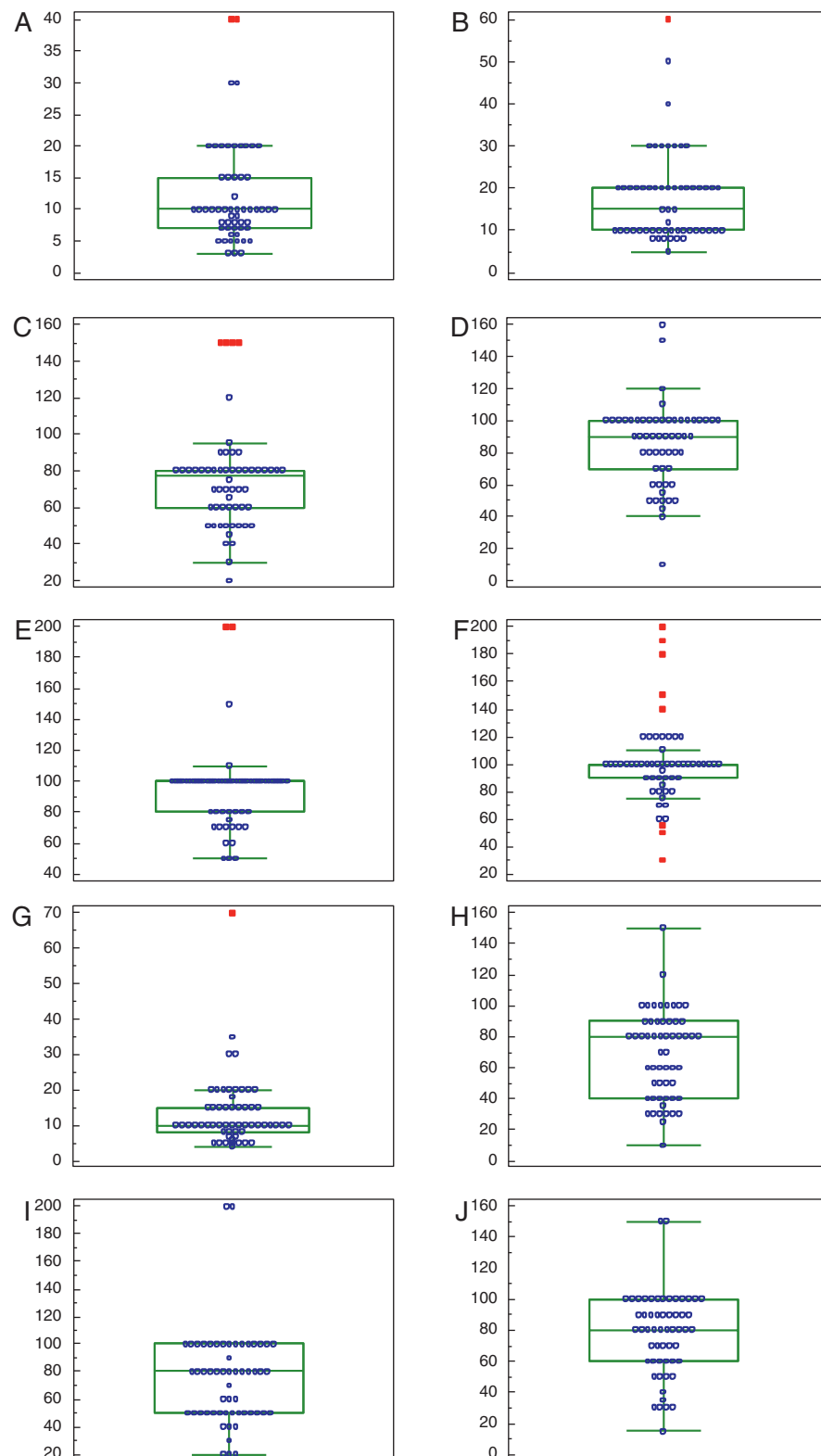
The analysis showed, overall, moderate correlation between estimated and actual values (ICC 0.582, 95% CI 0.28–0.74). The correlation did not improve when the results were analysed as a function of level of training, years of experience (>5 years) or absence of NSS in the soaked material (Table 3).

#### Discussion

Visual estimation is the method most widely used for determining intraoperative haemorrhage, despite several studies that have found it to be lacking in accuracy, precision and reproducibility.<sup>4</sup> The majority of the studies are conducted in the field of obstetrics and gynaecology, considering the huge impact of post-partum bleeding on morbidity and mortality. The different studies show that visual estimation either overestimates or underestimates haemorrhage.<sup>6</sup>

In this study, visual estimation was used by 100% of the participants and it was found to be moderately correlated with the actual measurement, with no evidence of improvement as a function of level of training, years of experience or absence of distractors such as saline solution.

Rubio et al. analysed the correlation between visual estimation and actual measurement of intrapartum blood volume



**Fig. 2** – Box diagrams of visual estimations for each case.

(A) Visual estimations of gauze pads with 5 cc of blood. (B) Visual estimations of gauze pads with 10 cc of blood. (C) Visual estimations of sponge with 25 cc of blood. (D) Visual estimations of sponge with 50 cc of blood. (E) Visual estimations of sponge with 75 cc of blood. (F) Visual estimations of sponge with 100 cc of blood. (G) Visual estimations of sponge with 5 cc of blood and 5 cc of saline solution. (H) Visual estimations of sponge with 25 cc of blood and 75 cc of saline solution. (I) Visual estimations of sponge with 50 cc of blood and 50 cc of saline solution. Visual estimations of sponge with 75 cc of blood and 25 cc of saline solution.

Source: Authors.

**Table 1 – Distribution of estimated vs. actual blood loss.**

Actual volume (ml)	Estimated volume (ml)	Average difference (ml)	p
<b>Sponges with WFB</b>			
25	74.46 ± 27.46 (20–150)	49.46	<0.001
50	84.82 ± 25.53 (10–160)	34.8	<0.001
75	94.38 ± 27.09 (50–200)	25.35	0.002
100	100.36 ± 29.85 (30–200)	1.25	0.76*
<b>Gauze pads with WFB</b>			
5	12.34 ± 8.22 (3–40)	7.33	<0.001
10	17.68 ± 10.73 (5–60)	7.68	<0.001
<b>Sponges with WFB plus NSS</b>			
50 ml WFB/50 ml NSS	74.82 ± 34.48 (20–200)	24.8	<0.001
25 ml WFB/75 ml NSS	68.75 ± 28.30 (10–150)	43.7	<0.001
75 ml WFB/25 ml NSS	77.32 ± 26.92 (15–150) 80	2.3	0.52*
5 ml WFB/5 ml NSS	13.55 ± 10.15 (4–70) 10	8.5	<0.001

Quantitative variables: mean plus/minus its standard deviation (range). Average difference: estimated haemorrhage – actual volume. ml, millilitres; WFB, whole fresh blood; NSSN, normal saline solution.

Source: Authors.

collected in women with normal deliveries in Bogotá. There was great estimation variability, with acceptable correlation that worsened as blood volumes increased. In their results, the trend was towards underestimation, but it is important to consider that the values assessed in their study were much higher (541.4 ml in average).<sup>7</sup>

**Table 2 – Logistic regression analysis of determining factors of agreement.**

Variable	OR	95.0% CI	p
Mix	0.786	0.532–1.162	0.228
Actual volume > 75 ml WFB	1.557	1.046–2.318	0.029
Level of training	1.762	1.045–2.969	0.033
Years of experience	0.998	0.976–1.0210	0.872

Mix, whole fresh blood mixed or not with normal saline solution; Level of training: anaesthetist – resident. Years of experience >5 years. WFB, whole fresh blood.

Source: Authors.

**Table 3 – Intraclass correlation coefficient for the estimated and actual volumes soaked in the surgical absorbent material.**

	ICC	95.0% CI
Overall	0.582	0.283–0.740
<b>Level of training</b>		
Anaesthetist	0.627	0.323–0.777
Resident	0.491	0.174–0.680
<b>Years of experience</b>		
<5 years	0.531	0.245–0.698
>5 years	0.632	0.303–0.787
<b>Presence of mix</b>		
YES	0.456	0.187–0.631
NO	0.641	0.322–0.791

ICCI, intraclass correlation coefficient; CI, confidence interval; Overall, refers to all estimations performed; Presence of mix, refers to whole fresh blood mixed or not with normal saline solution.

Source: Authors.

In the distribution analysis and in the analysis of the mean difference between the estimate and the actual value, it was interesting to find a marked trend towards overestimation (65.2%), a discrepancy which diminished as volumes increased (>75 ml), similar to what Larsson<sup>8</sup> and Yoong<sup>9</sup> found using volumes between 25 and 200 ml. The quality of visual estimation was also determined by the level of training of the observer (anaesthetist), but not so by the years of experience. Casquero-León in Lima, Perú, found a weak correlation between blood loss estimated visually and calculated intrapartum haemorrhage in nulliparous patients undergoing Caesarean section, with overestimation when intrapartum haemorrhage was less than 500 ml, and underestimation when it was greater than 1,000 ml.<sup>10</sup> Similar results were obtained by Cheeranichanunth and Poolnoi, in Thailand.<sup>11</sup>

The graphic analysis of estimation distributions shows the great heterogeneity of the results and the inaccuracy of visual estimation.

Considering the findings of this research, the great limitation and inaccuracy of visual estimation as a method for determining bleeding are confirmed. Also, considering the huge impact of haemorrhage on surgical outcomes, efforts to improve it must be a priority for the healthcare team,<sup>12</sup> with a focus on improving visual estimation by means of training and education<sup>13,14</sup> or introducing quantitative measurement tools to measure bleeding objectively and accurately.<sup>3</sup>

One of the limitations of this study was the sample size, which does not allow extrapolation of the data beyond the local setting. Second, the estimation was done using photographs and not in real circumstances when the anaesthetist may occasionally make a subjective determination of the weight of the material.

Despite the importance of this issue in the surgical field, it had not been approached locally, and this work shows evidence of the need to use more accurate methods for measuring intraoperative blood loss.

## Conclusions

Visual estimation performed by a group of anaesthetists in the city of Cartagena was shown to have poor correlation



with the actual measurement of blood impregnated in the surgical absorbent material. There is a need to use more accurate methods for the determination of intraoperative haemorrhage. Developing training and education programmes on the subject is an option, considering that there was a discreet improvement in correlation with the level of training, although it continued to be poor.

### Funding

None.

### Conflict of interest

None.

### Acknowledgements

The authors acknowledge all the seconded members of the Sociedad de Anestesiología y Reanimación de Bolívar for their voluntary contribution in this research.

And to all those people who contributed to the development and success of the project.

### Annex 1.



UNIVERSIDAD  
DE  
CARTAGENA

CONCORDANCIA ENTRE LA ESTIMACIÓN VISUAL DEL SANGRADO INTRAOPERATORIO HECHA POR ANESTESIOLOGOS DE LA CIUDAD DE CARTAGENA Y LA MEDICIÓN OBJETIVA, AÑO 2013.

Fecha:

Nivel Academico

Especialista: \_\_\_\_ Años \_\_\_\_

Residente: \_\_\_\_ Nivel \_\_\_\_

Institución:

Estime para cada foto el volumen de sangre aproximado en cada compresa:

1. \_\_\_\_ ml

2. \_\_\_\_ ml

3. \_\_\_\_ ml

4. \_\_\_\_ ml

Estime para cada foto el volumen de sangre aproximado en cada gasa:

5. \_\_\_\_ ml

6. \_\_\_\_ ml

En las siguientes fotografías las compresas y gasas fueron impregnadas con distintas proporciones de sangre y solución salina, por favor estime la cantidad de sangre en cada una:

7. \_\_\_\_ ml

8. \_\_\_\_ ml

9. \_\_\_\_ ml

10. \_\_\_\_ ml

Source: Authors

## REFERENCES

1. Weiser TG, Regenbogen SE, Thompson KD, Haynes AB, Lipsitz SR, Berry WR, et al. An estimation of the global volume of surgery: a modelling strategy based on available data. *Lancet*. 2008;372:139-44.
2. Zuluaga Giraldo M. Sangrado perioperatorio en niños. aspectos básicos. *Rev Colomb Anestesiología*. 2013;41:44-9.
3. Stahl DL, Groeben H, Kroepfl D, Gautam S, Eikermann M. Development and validation of a novel tool to estimate peri-operative blood loss. *Anaesthesia*. 2012;67:479-86.
4. Schorn MN. Measurement of blood loss: review of the literature. *J Midwifery Womens Health*. 2010;55:20-7.
5. Cortés-Reyes E, Rubio-Romero JA, Gaitán-Duarte H. Métodos estadísticos de evaluación de la concordancia y la reproducibilidad de pruebas diagnósticas. *Rev Colomb Obstet Ginecol*. 2010;61:247-55.
6. Al Kadri HM, Al Anazi BK, Tamim HM. Visual estimation versus gravimetric measurement of postpartum blood loss: a prospective cohort study. *Arch Gynecol Obstet*. 2011;283:1207-13.
7. Rubio-Romero JA, Gaitán-Duarte HG, Rodríguez-Malagón N. Concordancia entre la estimación visual y la medición del volumen recolectado en un bolsa del sangrado intraparto en mujeres con parto normal en Bogotá, Colombia, 2006. *Rev Colomb Obstet Ginecol*. 2008;59:92-102.
8. Larsson C, Saltvedt S, Wiklund I, Pahlen S, Andolf E. Estimation of blood loss after cesarean section and vaginal delivery has low validity with a tendency to exaggeration. *Acta Obstet Gynecol Scand*. 2006;85:1448-52.
9. Yoong W, Karavolos S, Damodaram M, Madgwick K, Milestone N, Al-Habib A, et al. Observer accuracy and reproducibility of visual estimation of blood loss in obstetrics: how accurate and consistent are health-care professionals? *Arch Gynecol Obstet*. 2010;281:207-13.
10. Casquero JL, Valle GA, Ávila JC, Paredes R, Saona LAP. Relación entre la pérdida sanguínea estimada y la pérdida sanguínea calculada en partos por cesárea en nulíparas. *Rev Per Ginecol Obstet*. 2012;58:115-21.
11. Cheerranichanunth P, Poolnoi P. Using blood loss pictogram for visual blood loss estimation in cesarean section. *J Med Assoc Thai*. 2012;95:550-6.
12. Dixon E, Datta I, Sutherland FR, Vauthey JN. Blood loss in surgical oncology: neglected quality indicator? *J Surg Oncol*. 2009;99:508-12.
13. Toledo P, McCarthy RJ, Burke CA, Goetz K, Wong CA, Grobman WA. The effect of live and web-based education on the accuracy of blood-loss estimation in simulated obstetric scenarios. *Am J Obstet Gynecol*. 2010;202, 400. e1-e5.
14. Bose P, Regan F, Paterson-Brown S. Improving the accuracy of estimated blood loss at obstetric haemorrhage using clinical reconstructions. *Br J Obstet Gynecol*. 2006;113:919-24.