



# Colombian Journal of Anesthesiology

## Revista Colombiana de Anestesiología

www.revcolanest.com.co

OPEN

 Wolters Kluwer

## Cardiac arrest in adult intensive care units in the Medellín metropolitan area, Colombia: observational study

### Paro cardiaco en las unidades de cuidado intensivo de adultos del área metropolitana de Medellín, Colombia. Estudio observacional

**Keywords:** Cardiac arrest, Intensive unit, Cardiac resuscitation, Mortality

**Palabras clave:** Paro cardiaco, Unidad de Cuidados Intensivos, Reanimación cardiopulmonar, Mortalidad

Juan Carlos Villa-Velásquez<sup>a</sup>, Natalia Andrea Hoyos-Vanegas<sup>b</sup>,  
Juan Carlos Gómez-Echeverry<sup>b</sup>, Airton Payares-Benítez<sup>b</sup>,  
Fabián David Casas-Arroyave<sup>a,c</sup>

<sup>a</sup> Anesthesia and Resuscitation Section, Medical School, Universidad de Antioquia, Medellín, Colombia

<sup>b</sup> IPS Universitaria, Universidad de Antioquia, Medellín, Colombia

<sup>c</sup> Anesthesia and Resuscitation Section, Hospital Universitario San Vicente Fundación, Medellín, Colombia.

#### Abstract

**Introduction:** In-hospital cardiac arrest (CA) is a rare but life-threatening event. However, the epidemiology of this event in intensive care units (ICU) is not clear.

**Objective:** To determine the clinical characteristics of CA in adult patients hospitalized in several ICU of the Metropolitan Area of the Aburrá Valley, Colombia, over a period of 1 year.

**Methods:** Observational study for a limited period of 1 year for adult patients with CA in the ICU of the hospitals of the Metropolitan Area of the Aburrá Valley, Colombia: San Vicente Fundación University Hospital, IPS University, and Manuel Uribe Ángel Hospital.

**Results:** Of 3710 eligible patients who were treated in 91 beds, 646 CA events occurred during this period, of which 151 were candidates

for resuscitation maneuvers. The overall incidence of CA in the ICU was 17.1%, without differences between the 3 hospitals included and the incidence of resuscitable CA was 39.9 cases per 1000 admissions to the ICU. The most common CA rhythm was asystole 54.3% and the overall survival at hospital discharge was 3.3%.

**Conclusion:** In the analyzed ICU, CA was an infrequent event, but it presents a high mortality at discharge from the ICU and hospital. However, the few patients who survive have a good neurological prognosis.

#### Resumen

**Introducción:** El paro cardiaco intrahospitalario es un evento poco frecuente, pero potencialmente mortal. No obstante, no es clara su epidemiología en las unidades de cuidado intensivos.

How to cite this article: Villa-Velásquez JC, Hoyos-Vanegas NA, Gómez-Echeverry JC, Payares-Benítez A, Casas-Arroyave FD. Cardiac arrest in adult intensive care units in the Medellín metropolitan area, Colombia: observational study. Case report. Colombian Journal of Anesthesiology. 2020;48:118-125.

Read the Spanish version of this article at: <http://links.lww.com/RCA/A926>

Copyright © 2020 Sociedad Colombiana de Anestesiología y Reanimación (S.C.A.R.E.). Published by Wolters Kluwer. This is an open access article under the CC BY-NC-ND license (<http://creativecommons.org/licenses/by-nc-nd/4.0/>).

Correspondence: Sección de Anestesiología y Reanimación, Hospital Universitario San Vicente Fundación, Calle 64 # 51D-154, Medellín, Colombia. E-mail: [fabian.casas@udea.edu.co](mailto:fabian.casas@udea.edu.co)

Colombian Journal of Anesthesiology (2020) 48:3

<http://dx.doi.org/10.1097/CJ9.0000000000000156>

**Objetivo:** Determinar las características clínicas del paro cardiorrespiratorio en pacientes adultos hospitalizados en varias unidades de cuidado intensivo (ICU) del Área Metropolitana del Valle de Aburrá, Colombia, en un período de 12 meses.

**Métodos:** Estudio observacional por período limitado a un año para pacientes adultos con paro cardiorrespiratorio en las ICU de los hospitales del Área Metropolitana del Valle de Aburrá, Colombia: Hospital Universitario San Vicente Fundación, IPS Universitaria, y Hospital Manuel Uribe Ángel.

**Resultados:** De 3710 pacientes elegibles que fueron atendidos en 91 camas se presentaron en este período 646 eventos de paro cardiorrespiratorio, de los cuales 151 fueron candidatos a maniobras de reanimación. La incidencia global de paro en ICU fue de 17,1 % (IC 95 %: 15,9 %-18,3%), sin diferencias entre los tres hospitales incluidos y una incidencia de paro cardiorrespiratorio susceptible de recibir reanimación cardiopulmonar de 39,9 casos por cada 1000 admisiones a la ICU. El ritmo de paro más común fue la asistolia (54,3 %) y la sobrevida global al alta hospitalaria fue de 3,3 %.

**Conclusión:** El paro cardiorrespiratorio no fue un evento frecuente en las ICU analizadas, pero presenta una alta mortalidad al alta de ICU y hospitalaria. Sin embargo, los pocos pacientes que logran sobrevivir tienen buen pronóstico neurológico.

## Introduction

Cardiac arrest (CA) is the sudden and, in principle, potentially reversible interruption of circulation and spontaneous breathing. According to the literature, the main etiology is cardiovascular disease,<sup>1-3</sup> with a general incidence of 375,000 adults/year in Europe and 162,000 adults/year in the United States; however, in intensive care units (ICU), it varies between 5.6 and 78.1 for every 1000 patients admitted.<sup>1</sup>

In Colombia, according to the statistics agency Departamento Nacional de Estadística (DANE), 68,640 deaths related to cardiovascular diseases in patients over 15 years of age were reported in 2017.<sup>4</sup> Attempts have been made at describing the local epidemiology of CA in different settings. In 2011, Valencia et al<sup>5</sup> reported that, in Cali, 80% of cases occurred in the emergency service and 20% in the ICU.

It is estimated that close to 200,000 hospital admissions are complicated with a case of CA every year, with a survival of only 20% at discharge<sup>6</sup> and a large proportion of survivors with sequelae. There are differences between arrests occurring and addressed in the hospital and those occurring in an out-of-hospital setting,<sup>7,8</sup> perhaps due to the fact that, in the latter, resuscitation maneuvers are initiated later. Likewise, survival after in-hospital CA may vary depending on the service in which it occurs: 16% in the ICU, 23% in the emergency department, and 12% in inpatient units.<sup>9</sup>

However, no studies have been conducted in Colombia describing the clinical characteristics of patients with CA

in ICU, their survival, not to mention the neurological sequelae after discharge. The objective of this study was to determine the clinical characteristics of CA in patients hospitalized in different ICU of the Medellín metropolitan area over a 12-month period.

## Materials and methods

Observational study that included patients over 18 years of age who went into CA in several ICUs of the Valle de Aburrá and Medellín metropolitan area over a 1-year period (January 2017–January 2018). The protocol was submitted for evaluation and approval by the Ethics Committee of Universidad de Antioquia and the different participating institutions: Hospital San Vicente Fundación (4 ICUs, 45 beds); IPS Universitaria (3 ICUs, 32 bed); and ESE Hospital Manuel Uribe Ángel (1 ICU, 14 beds).

Each of the studied units had a 1:2 practical nurse: patient ratio and were covered around the clock by critical and intensive care medicine specialists.

The inclusion criteria were patients over 18 hospitalized in the ICU who went into CA; pregnant patients and patients admitted to the ICU because of post-CA state were excluded.

After the protocol was approved by each of the participating healthcare institutions, a coordinator responsible for completing the relevant electronic data collection form was appointed at each site. In addition, a periodic audit of patient data reported as eligible was conducted by the principal investigator team. The primary source for data collection was the individual clinical record.

Four types of ICU were considered for the analysis: cardiovascular, surgical, medical, and polyvalent or mixed. The epidemiological visualization window was 12 months and 100% of the patients with eligibility criteria in the three healthcare sites were effectively included in the study analysis.

## Statistical analysis

Qualitative variables are presented in the form of proportions or frequencies. The Shapiro–Wilk test was used to run the normality tests for quantitative variables. Variables showing a normal distribution are presented in terms of means and standard deviations. Variables with non-normal distribution are expressed as medians and interquartile ranges.

An exploratory analysis was conducted among the variables in accordance with the type of ICU. Chi square ( $\chi^2$ ) homogeneity tests were used for qualitative variables, ANOVA for normal quantitative variables, and the Kruskal–Wallis test for non-normal quantitative variables. All analyses were carried out using the SPSS 24 statistical software package.

## Results

In 3781 patients admitted to the different ICU during the study period, 646 CA events were analyzed, and, of these, 151 effectively received resuscitation maneuvers (Fig. 1).

The overall incidence of CA was 17.1% (95% confidence interval [CI]: 15.9%–18.3%): 13.9% for Hospital Manuel Uribe Ángel (95% CI: 11.6%–16.7%); 18.8% for Hospital Universitario San Vicente Fundación (95% CI: 17%–20.8%) and 16.7% for IPS Universitaria, Leon XIII campus, (95% CI: 14.9%–18.7%) ( $P=0.4761$ ).

The overall incidence rate was 21 for every 1000 days of ICU stay. When this event is analyzed in patients who can receive resuscitation, the incidence is 4.0% (95% CI: 3.4%–4.6%).

Table 1 shows the characteristics of all CA events that occurred in the ICUs. Annex 1 shows the characteristics of effectively resuscitated patients in the ICU.

The most common cause of CA in resuscitable patients in the ICU was septic shock in close to 50.3% of all cases, followed by cardiogenic shock in 14% of cases. This relationship was the same in all the types of ICUs studied (Table 2, Fig. 2).

Median stay before CA in resuscitated patients was 3 days and the most common arrest rhythm was pulseless electrical activity (PEA) in 54.3%. Median duration of resuscitation maneuvers was 9 minutes, with no difference between the different rhythms.

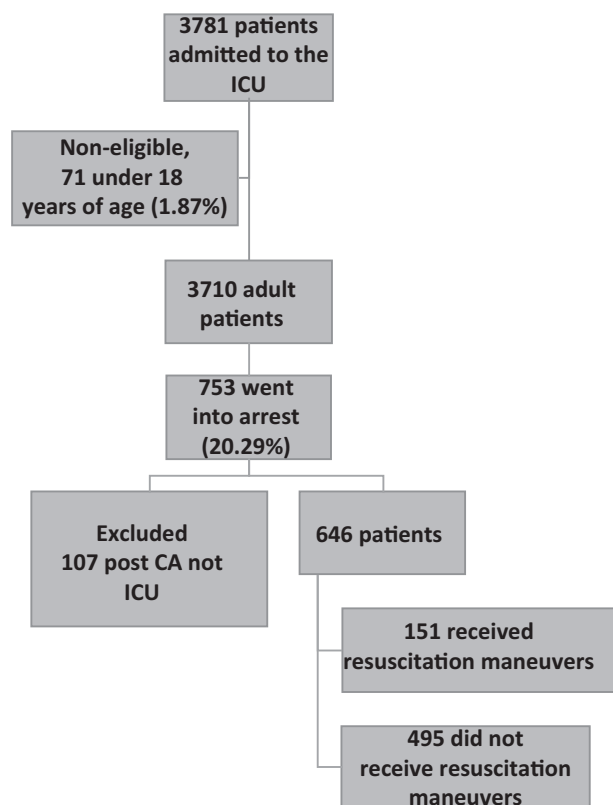


Figure 1. Patient flowchart.  
Source: Authors.

Of the total number of CA patients who received cardiopulmonary resuscitation (CPR) maneuvers, 25.8% returned to spontaneous circulation, but only 6.6% were discharged alive from the ICU.

For patients with CA who returned to spontaneous circulation, mean age was 55.87 years with a median resuscitation time of 7.28 minutes, none received therapeutic hypothermia during the postarrest period, and only 7.69% of the arrest rhythms were amenable to defibrillation.

The median neurological score for overall performance Cerebral Performance Category (CPC) was 1 (interquartile range [IQR] 1–3) and the median on the Glasgow scale was 15 (IQR 11–15). Of the 10 patients who were discharged alive from the ICU, only 5 were discharged alive from the hospital, with a median CPC of 1 (Table 3).

## Discussion

Studies on the incidence and characteristics of CA in ICU are not found frequently in the world literature, contrary to what could be expected. This limits the possibility of implementing strategies to lower the incidence.

CA is a catastrophic event associated with high mortality and considerable morbidity.<sup>1</sup> However, statistics show that survival after in-hospital CA is 3.8 times higher than for out-of-hospital arrest<sup>7</sup> given that the possibility of returning to spontaneous circulation and minimizing neurological damage depends on how soon basic but high-quality resuscitation maneuvers are initiated and the timely availability of technology resources. This means that expected outcomes are better in CA that occurs and is managed in the hospital setting.

However, differences are found inside the same hospital, depending on the care setting. Better results are found in the surgery area because of the characteristics of the surgical patients, continuous monitoring and specialized care.<sup>10</sup>

For patients receiving care in the ICU, considerations are different from what is found in other in-hospital settings, because of continuous telemetry monitoring and immediate availability of specialized human resources. Although this would lead to the assumption that outcomes ought to be better in this population, patients receiving care in the ICU are the most complex and severely ill, resulting in worse outcomes in view of their limited physiological reserve, as was shown in this report.

Efendijev et al<sup>11</sup> conducted a systematic review of the literature on the incidence and prognosis of adult patients who went into CA while in the ICU. Their results revealed a prevalence of ICU CAs ranging between 0.6%<sup>9</sup> and 7.8%<sup>12</sup> and an incidence ranging between 5.6 and 78.1 for every 1000 admissions. This study identified a prevalence of 4% and an incidence of 40 cases of CA that received CPR maneuvers for every 1000 patients admitted. Moreover, a

Table 1. Clinical and demographic characteristics of all CA in the ICU.

Characteristic	Total (n=646)	Polyvalent ICU (n=173)	Medical ICU (n=125)	Surgical ICU (n=216)	Cardiovascular ICU (n=132)
Age ( $\mu$ , SD)	60.42 (17.53)	62.11 (17.33)	61.46 (18.04)	56.88 (18.20)	63.01 (15.90)
Male n (%)	366 (56.7%)	93 (53.8%)	74 (59.2%)	128 (59.3%)	71 (53.8%)
HTN n (%)	340 (52.6%)	94 (54.3%)	69 (55.2%)	94 (43.5%)	83 (62.9%)
DM n (%)	147 (22.8%)	34 (19.7%)	33 (26.4%)	40 (18.5%)	40 (30.3%)
Coronary heart disease n (%)	66 (10.2%)	29 (16.8%)	10 (8%)	6 (2.8%)	21 (15.9%)
CVD n (%)	25 (3.9%)	7 (4%)	4 (3.2%)	9 (4.2%)	5 (3.8%)
CKD n (%)	107 (16.6%)	28 (16.2%)	26 (20.8%)	24 (11.1%)	29 (22%)
Heart failure n (%)	84 (13%)	20 (11.6%)	18 (14.4%)	15 (6.9%)	31 (23.5%)
COPD n (%)	117 (18.1%)	31 (17.9)	28 (22.4%)	29 (13.4%)	29 (22%)
Arrest rhythm PEA n (%)	414 (64.1%)	101 (58.4%)	72 (57.6%)	152 (70.4%)	89 (67.4%)
Length of stay before CA	8.48 (9.76)	7.69 (9.6)	13.83 (13.45)	6.20 (6.46)	8.16 (8.35)
Resuscitation duration min ( $\mu$ , SD)	2.77 (6.65)	3.20 (7.25)	2.21 (5.36)	2.51 (6.94)	3.15 (6.46)
Not candidate for resuscitation n (%)	495 (76.6%)	129 (74.6%)	98 (78.4%)	175 (81%)	93 (70.5%)
pH ( $\mu$ , SD)	7.22 (0.18)	7.21 (0.2)	7.22 (0.17)	7.21 (0.17)	7.23 (0.18)
PCO <sub>2</sub> ( $\mu$ , SD)	43.77 (19.51)	46.44 (18.12)	41.36 (13.61)	43.79 (22.33)	43.63 (18.92)
PaO <sub>2</sub> /FiO <sub>2</sub> ( $\mu$ , SD)	199.58 (101.29)	199.28 (85.5)	199.26 (102.10)	207.44 (104.83)	189.6 (105.59)
HCO <sub>3</sub> ( $\mu$ , SD)	17.65 (6.33)	18.16 (5.72)	17.04 (6.59)	17.63 (6.18)	17.76 (6.81)
BE ( $\mu$ , SD)	-8.33 (8.32)	-6.89 (7.49)	-8.38 (8.98)	-9.29 (7.80)	-7.78 (9.20)
Sodium ( $\mu$ , SD)	140.29 (10.32)	140.6 (7.57)	140.83 (9.48)	138.97 (13.59)	141.27 (7.73)
Potassium ( $\mu$ , SD)	4.37 (1.12)	4.5 (0.8)	4.49 (1.26)	4.23 (1.26)	4.31 (0.99)
Chlorine ( $\mu$ , SD)	107.98 (8.87)	106.6 (8.7)	107.65 (10.2)	109.27 (8.56)	107.73 (7.8)
Prior serum lactate (mmol/l) ( $\mu$ , SD)	5.6 (4.75)	6.76 (5.6)	5.26 (4.52)	4.85 (4.21)	6.63 (5.08)
APACHE II score ( $\mu$ , SD)	20.24 (7.99)	21.62 (8.8)	20.85 (7.88)	19.2 (6.48)	19.22 (8.43)
Most frequent admission diagnosis (%)	Septic shock of pulmonary origin 13.6%	Septic shock of pulmonary origin 13.9%	Septic shock of abdominal origin 16.8%	Septic shock of pulmonary origin 13.9%	Cardiovascular surgery POP 12.9%
POP patient n (%)	257 (39.8%)	82 (47.4%)	53 (42.4%)	55 (25.5%)	67 (50.8%)
Prior CVC use n (%)	581 (89.9%)	151 (87.3%)	117 (93.6%)	188 (87%)	125 (94.7%)
Arterial line before arrest n (%)	500 (77.4%)	128 (74%)	118 (94.4%)	182 (84.3%)	72 (54.5%)
Ventilation support n (%)	601 (93%)	158 (91.3%)	118 (94.4%)	202 (93.5%)	123 (93.2%)
Prior hemodynamic support n (%)	445 (68.9%)	144 (83.2%)	94 (75.2%)	105 (48.6%)	102 (77.3%)
Return to SC n (%)	48 (7.43%)	12 (6.9%)	9 (7.2%)	11 (5.1)	16 (12.9%)
Survival after ICU discharge n (%)	10 (1.54%)	4 (2.3%)	2 (1.6%)	2 (0.9%)	2 (1.5%)

$\mu$  = means, BE = base excess, CKD = chronic kidney disease, COPD = chronic obstructive pulmonary disease, CVC = central venous catheter, CVD = cerebrovascular disease, DM = diabetes mellitus, HCO<sub>3</sub> = bicarbonate, HTN = chronic arterial hypertension, PaO<sub>2</sub>/FiO<sub>2</sub> = oxygen pressure and inspired oxygen ratio, PEA = pulseless electrical activity, POP = postoperative, SC = spontaneous circulation, SD = standard deviation.

Source: Authors.

**Table 2. Attributable causes of CA in patients who underwent cardiopulmonary resuscitation.**

Causes attributable to CA n (%)	Total (n=151)	Polyvalent ICU (n=44)	Medical ICU (n=27)	Surgical ICU (n=41)	Cardiovascular ICU (n=39)
Septic shock	76 (50.3)	22 (50)	19 (70.4)	18 (43.9)	19 (48.7)
Pulmonary	27 (17.9)	8 (18.2)	6 (22.2)	7 (17.1)	6 (15.4)
No clear focus	22 (14.6)	5 (11.4)	4 (14.8)	6 (14.6)	9 (23.1)
Abdominal	11 (7.3)	3 (6.8)	2 (7.4)	4 (9.8)	2 (5.1)
Urinary tract	6 (4)	3 (6.8)	3 (11.1)	0 (0)	0 (0)
CNS	4 (2.6)	1 (2.3)	2 (7.4)	1 (2.4)	0 (0)
Soft tissues	5 (3.3)	2 (4.5)	1 (3.7)	0 (0)	2 (5.1)
Cardiovascular	1 (0.7)	0 (0)	1 (3.7)	0 (0)	0 (0)
Cardiogenic shock	22 (14.6)	11 (25)	1 (3.7)	1 (2.4)	9 (23.1)
Hypovolemic shock	15 (9.9)	4 (9.1)	1 (3.7)	8 (19.5)	2 (5.1)
Multiple trauma	9 (6)	4 (9.1)	1 (3.7)	3 (7.3)	1 (2.6)
Head injury, cerebral edema	10 (6.6)	1 (2.3)	2 (7.4)	4 (9.8)	3 (7.7)
Hypercapnic ventilatory failure	6 (4)	1 (2.3)	2 (7.4)	1 (2.4)	2 (5.1)
Hypoxemic ventilatory failure	10 (6.6)	1 (2.3)	1 (3.7)	6 (14.6)	2 (5.1)
Vasoplegic shock	1 (0.7)	0 (0)	0 (0)	0 (0)	1 (2.6)

CA = cardiac arrest, CNS = central nervous system, ICU = intensive care unit.  
Source: Authors.

rate of 4.9 CA for every 1000 ICU bed days was found, a rate that was not reported in other studies.

ICU patients are often labeled as *non-resuscitable* in advance due to their poor prognosis, either because of their current condition or their underlying disease. Of the 3710 eligible patients, there were 495 (13.3%) CA events which were not managed with CPR maneuvers because of the advance *do not resuscitate* directive from the patient or the family, or because of medical futility considered by the attending team. In the literature, advance directives to not resuscitate were found in 0.3% of cases, much lower than the result in this study.

When analyzing CA, it is critical to identify the initial arrest rhythms, because of differences in management and prognosis. In our study, the rhythm found most frequently in patients with CA who were resuscitated was PEA in 54% of the events, similar to the finding by Efendijev et al<sup>1</sup> in their systematic review in which non-defibrillatable rhythms (pulseless electrical activity and asystole) were the most frequent, ranging between 55% and 84% of the events. Considering the underlying pathophysiology of coronary disease and heart diseases in general, a higher

frequency of defibrillatable rhythms was expected as initial CA presentation in patients hospitalized in cardiovascular ICUs; however, non-defibrillatable rhythms were found to have the highest incidence, at 46.2%. This could perhaps be attributed to occupancy by a good number of cardiac surgery patients in whom CA is associated with complications such as cardiac tamponade, hemorrhagic shock, bradyarrhythmias, and vasoplegic shock.

The American Heart Association<sup>13</sup> reported that hypothermia was used in 35.6% of the patients who returned to spontaneous circulation after CA as a neuroprotective strategy in the ICU (maintaining the temperature between 32 and 34°C), in particular if the initial arrest rhythm was defibrillatable. In this study, none of the 10 patients who returned to spontaneous circulation received that therapy. This may be explained by the change in the level of recommendation between the 2010 and the 2015 guidelines, which went from recommending deliberate hypothermia to targeted temperature management between 32 and 36°C.

The present study has several limitations. First, being a descriptive study, no comparisons can be made to provide

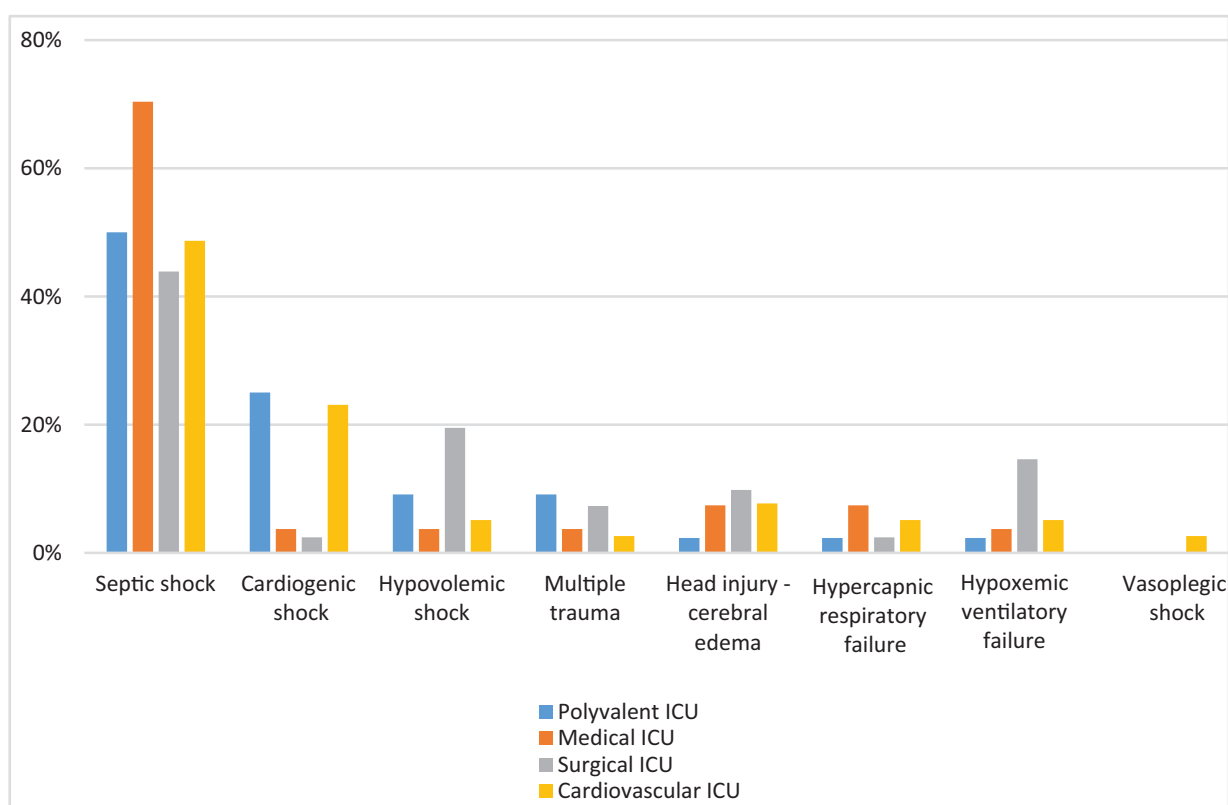


Figure 2. Attributed CA causes according to the type of ICU. CA = cardiac arrest, ICU = intensive care units. Source: Authors.

definitive conclusions regarding important outcomes. Second, given the sporadic occurrence of the event, data were collected from the clinical record, limiting the information to that documented by the treating physi-

cians, which results in potential information bias. In addition, the Ulstein method, which allows all the participants in the management of CA to collect data, was not used in this study. Third, the number of patients

Table 3. Resuscitation characteristics of all CA events occurring in the ICU in patients who received CPR maneuvers.

Characteristic	Total (n=151)	Polyvalent ICU (n=44)	Medical ICU (n=27)	Surgical ICU (n=41)	Cardiovascular ICU (n=39)	P value
Arrest rhythms						
PEA n (%)	82 (54.3)	30 (68.2)	15 (55.6)	19 (46.3)	18 (46.1)	0.113
Asystole n (%)	57 (37.74)	11 (25)	8 (29.62)	20 (48.7)	18 (46.1)	
VF n (%)	5 (3.31)	0 (0)	1 (3.7)	2 (4.87)	2 (5.12)	
VT n (%)	7 (4.63)	3 (6.81)	3 (11.11)	0 (0)	1 (2.56)	
Resuscitation duration. Median (IQR)	9 (5-15)	10 (9-15)	8 (7-2)	9 (7-14)	9 (7-13)	0.781
Return to SC n (%)	39 (25.8)	10 (22.7)	8 (29.6)	9 (22)	12 (30.8)	0.730
Length of stay after cardiac arrest. Median (IQR)	3 (1-9)	10 (7-17)	4 (0-14)	1 (0-3)	0 (0-1)	0.052
Survival at ICU discharge n (%)	10 (6.6)	4 (9.09)	2 (7.40)	2 (4.87)	2 (5.12)	0.165

CPR = cardiopulmonary resuscitation, IQR = inter-quartile range, PEA = pulseless electrical activity, SC = spontaneous circulation, VF = ventricular fibrillation, VT = ventricular tachycardia. Source: Authors.

may be limited, a drawback that we tried to address with the multicenter design and a 12-month data collection period. Fourth, although for the analysis ICUs were classified according to their designated use in each site as medical, polyvalent, surgical, or cardiovascular, in reality they are all polyvalent units due to bed occupancy factors.

### Conclusion

Although infrequent, CA in the ICU is catastrophic and associated with high mortality, both at discharge from the ICU as well as from the hospital. The local epidemiology in terms of incidence and rate of event occurrence in the ICU is consistent with the epidemiological data reported in the literature; however, the incidence of “non-resuscitation” in the ICU is by far higher than that reported internationally.

Moreover, it is clear that the few patients that are discharged alive after an event of this type have an apparently good neurological prognosis.

However, studies with a better methodological design are needed to identify factors that may potentially improve survival after CA in ICU and the main causes of “non-resuscitation” in our ICUs.

### Ethical responsibilities

**Human and animal protection.** The authors declare that the procedures followed were in compliance with the ethical standards of the responsible human experimentation committee, and in accordance with the World Medical Association and the Declaration of Helsinki.

**Data confidentiality.** The authors declare that they have followed the protocols of their institutions pertaining to patient information disclosure.

**Right to privacy and informed consent.** The research was approved by the institutional ethics committee in minutes no. 005 of March 31, 2016 which state the waiver of the informed consent requirement given that the study is classified as having no risk in accordance with Ministry of Health Resolution 8430 of 1993. The corresponding author is in possession of this document.

### Acknowledgments

Our gratitude to the Institutions and to the coordinators of the Intensive Care Units of the hospitals that participated during the development of this project.

### Financial support

Authors Juan Carlos Villa and Fabián Casas are members faculty members of Universidad de Antioquia, Colombia, in the Surgery Department of the Medical School.

### Conflicts of interest

The authors have no conflicts of interest to disclose.

### References

1. Efendijev I, Nurmi J, Castrén M, et al. Incidence and outcome from adult cardiac arrest occurring in the intensive care unit: a systematic review of the literature. *Resuscitation* 2014;85:472–479.
2. Navarro VJR. Registry of cardiac arrest in adults. *Rev Fac Med* 2005;53:196–203.
3. Cogollo Mejía DA, Londoño Cano V, Toro González JE, Fernandez Restrepo JJ, Patiño Restrepo C. Review of international, national and local cases of prehospital care of cardio-respiratory arrest with and without an automatic external defibrillator. [Internet]. Medellín: Editorial Universidad CES; 2010 [cited 2020 May 14]. Available at: <http://wap.smsHungama.in/handle/10946/2783>
4. Hincapie C, Ricunque D. Tablas abreviadas de mortalidad nacional 1985–2020. 2017;DANE, 3. <https://www.dane.gov.co/index.php/esta-disticas-por-tema/demografia-y-poblacion/series-de-poblacion>.
5. Valencia W, Navarro JR, Ramírez K, et al. Implementation of a Cardiopulmonary Arrest Registry in a Secondary-level Hospital. *Colombian Journal of Anesthesiology* 2012;39:478–487.
6. Chen LM, Nallamothu BK, Spertus JA, et al. Association between a hospital rate of cardiac arrest incidence and cardiac arrest survival. *JAMA Intern Med* 2013;173:1186–1195.
7. Fredriksson M, Aune S, Bång A, et al. Cardiac arrest outside and inside hospital in a community. Mechanisms behind the differences in outcome and outcome in relation to time of arrest. *Am Heart J* 2010;159:749–756.
8. Redpath C, Sambell C, Stiell I, et al. In-hospital mortality in 13,263 survivors of out-of-hospital cardiac arrest in Canada. *Am Heart J* 2010;159:577–583.
9. Wallace S, Ewer MS, Price KJ, et al. Outcome and cost implications of cardiopulmonary resuscitation in the medical intensive care unit of a comprehensive cancer center. *Support Care Cancer* 2002;10:425–429.
10. De-la-Chica R, Colmenero M, Chavero MJ, et al. Prognostic factors of mortality in a cohort of patients with hospital cardiorespiratory arrest. *Med Intensiva* 2010;34:161–169.
11. Efendijev I, Raj R, Reinikainen M, et al. Temporal trends in cardiac arrest incidence and outcome in Finnish intensive care units from 2003 to 2013. *Intensive Care Med* 2014;40:1853–1861.
12. Skrifvars MB, Varghese B, Parr MJ. Survival and outcome prediction using the Apache III and the out-of-hospital cardiac arrest (OHCA) score in patients treated in the intensive care unit (ICU) following out-of-hospital, in-hospital or ICU cardiac arrest. *Resuscitation* 2012;83:728–733.
13. Callaway CW, Donnino MW, Fink EL, et al. Post-cardiac arrest care: 2015 American Heart Association Guidelines Update for Cardiopulmonary Resuscitation and Emergency Cardiovascular Care. *Circulation* 2015;132 (18suppl2):S465–S482.

**Annex 1. Characteristics of patients amenable to resuscitation in the ICU**

Characteristic	Total (n = 151)	Polyvalent ICU (n = 44)	Medical ICU (n = 27)	Surgical ICU (n = 41)	Cardiovascular ICU (n = 39)	P value
Age ( $\mu$ , SD)	59.78 (17.24)	61.8 (16.66)	60.30 (18.17)	53.46 (16.14)	63.79 (17.18)	0.040
Male n (%)	82 (54.3%)	20 (45.5%)	17 (63%)	25 (61%)	20 (51.3%)	0.379
Comorbidities						
HTN n (%)	79 (52.3%)	27 (61.4%)	16 (59.3%)	14 (34.1%)	22 (56.4%)	0.050
DM n (%)	42 (27.8%)	15 (34.1%)	10 (37%)	4 (9.8%)	13 (33.3%)	0.026
Coronary heart disease n (%)	22 (14.6%)	13 (29.5%)	3 (11.1%)	1 (2.4%)	5 (12.8%)	0.040
CVD n (%)	3 (2%)	0 (0%)	1 (3.7%)	1 (2.4%)	1 (2.6%)	0.703
CKD n (%)	31 (20.5%)	10 (22.7%)	9 (33.3%)	5 (12.2%)	7 (17.9%)	0.191
CHF n (%)	26 (17.2%)	5 (11.4%)	5 (18.5%)	3 (7.3%)	13 (33.3%)	0.012
COPD n (%)	37 (24.5%)	14 (31.8%)	9 (33.3%)	4 (9.8%)	10 (25.6%)	0.064
APACHE II score ( $\mu$ , SD)	19.85 (8.23)	19.25 (8.51)	19.54 (6.71)	19.2 (8.11)	21.18 (9.03)	0.703
POP patient n (%)	52 (34.4%)	21 (47.7%)	7 (25.9%)	8 (19.5%)	16 (41.0%)	0.028
Prior CVC use n (%)	124 (82.1%)	32 (72.7%)	22 (81.5%)	34 (82.9%)	36 (92.3%)	0.143
Arterial line before the arrest n (%)	108 (71.5%)	29 (65.9%)	23 (85.2%)	33 (80.5%)	23 (59%)	0.050
Ventilation support n (%)	129 (85.4%)	36 (81.8%)	24 (88.9%)	33 (80.5%)	36 (92.3%)	0.390
Prior hemodynamic support n (%)	101 (66.9%)	33 (75%)	18 (66.7%)	21 (51.2%)	29 (74.4%)	0.070

$\mu$  = means, CHF = congestive heart failure, CKD = chronic kidney disease, COPD = chronic obstructive pulmonary disease, CVC = central venous catheter, CVD = cerebrovascular disease, DM = diabetes mellitus, HTN = chronic arterial hypertension, POP = postoperative, SD = standard deviation.